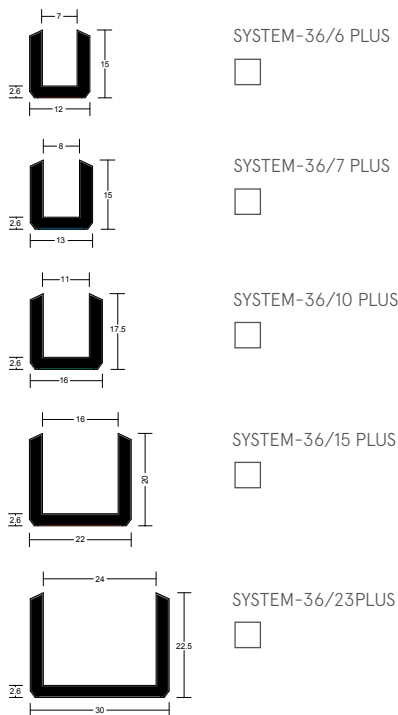


## SYSTEM-36 PLUS FITTING GUIDE

**FD30** **certifire**  
**FD60** (CF5060)

DEPENDENT ON  
GASKET + GLASSTYPE



### NOTE

Fitting is completely clean and dry. No sealant, adhesive tape or wet adhesive is required.

### STEP 1

Fit glazing system over pane edge.

### STEP 2

Pull the glazing system along one side of the panel, until taut.

### STEP 3

Notch the corner at 90°, without cutting the coloured channel base, and fold around the corner to form a 45° mitre.

### STEP 4

Continue for the remaining sides and fully mitre the meeting corner. Alternatively, cut the channel to side lengths and mitre the corners to 45°.

### STEP 5

Join the sections of glazing system at pane corner intersections - **ensuring there are no gaps at the corners.**

### STEP 6

If mitres pull apart, a small amount of adhesive could be used to ease fitting at meeting points.

### STEP 7

With the glazing system in place, all other fitting follows standard practice.

### STEP 8

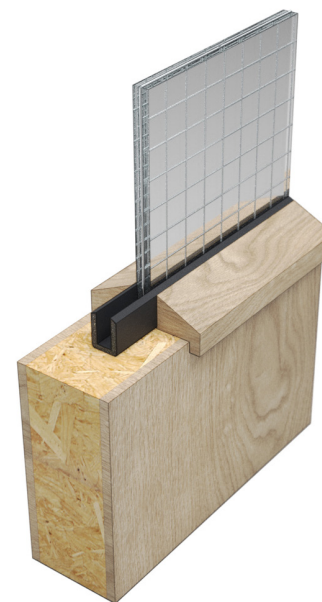
Beads may be pin-fixed or screw-fixed for System-36/6 PLUS and -36/7 PLUS, but screw fixed on all other sizes. It is essential that beads of the correct dimensions are used. For further details please refer to Lorient's Fire Resistant Glazing Systems brochure.

### NOTE

For all glass types other than 6mm Pyroacet® and 6mm Pyro-tuf®, to work out glass size, measure the aperture, less the thickness of the gasket, less a 0.5mm fitting tolerance all round.

For 6mm Pyroacet® and 6mm Pyro-tuf®, to work out glass size, measure the aperture, less the thickness of the gasket, less a 4mm fitting tolerance all round. 4mm thick hardwood setting blocks should be used along bottom edge only.

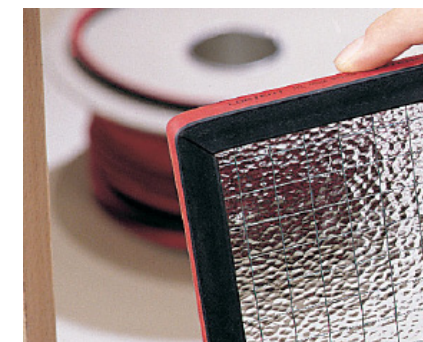
**Please note that butt jointing of the gasket will invalidate the test evidence.**



### NOTE

Recommendations as to methods, use of materials and construction details are based on the experience and knowledge of Lorient and are given in good faith as a general guide and service to designers, contractors and manufacturers.

Lorient reserves the right to make alterations or delete any installation detail without prior notice.



V1



Lorient Polyproducts Ltd  
Endeavour House  
Fairfax Road  
Heathfield Ind Estate  
Newton Abbot  
Devon TQ12 6UD  
United Kingdom

+44 (0)1626 834252  
[www.lorientgroup.com](http://www.lorientgroup.com)

All rights reserved. No part of this fitting guide may be reproduced, stored in a retrieval system, or transmitted in any means, electronic, mechanical, photocopying, recording or otherwise without the written permission of Lorient Polyproducts Limited.  
© Lorient Polyproducts Ltd 2021

### CONTENTS

- System-36 PLUS

### TOOLS REQUIRED

- Adhesive (optional)

For more information please call:

**+44 (0)1626 834252**